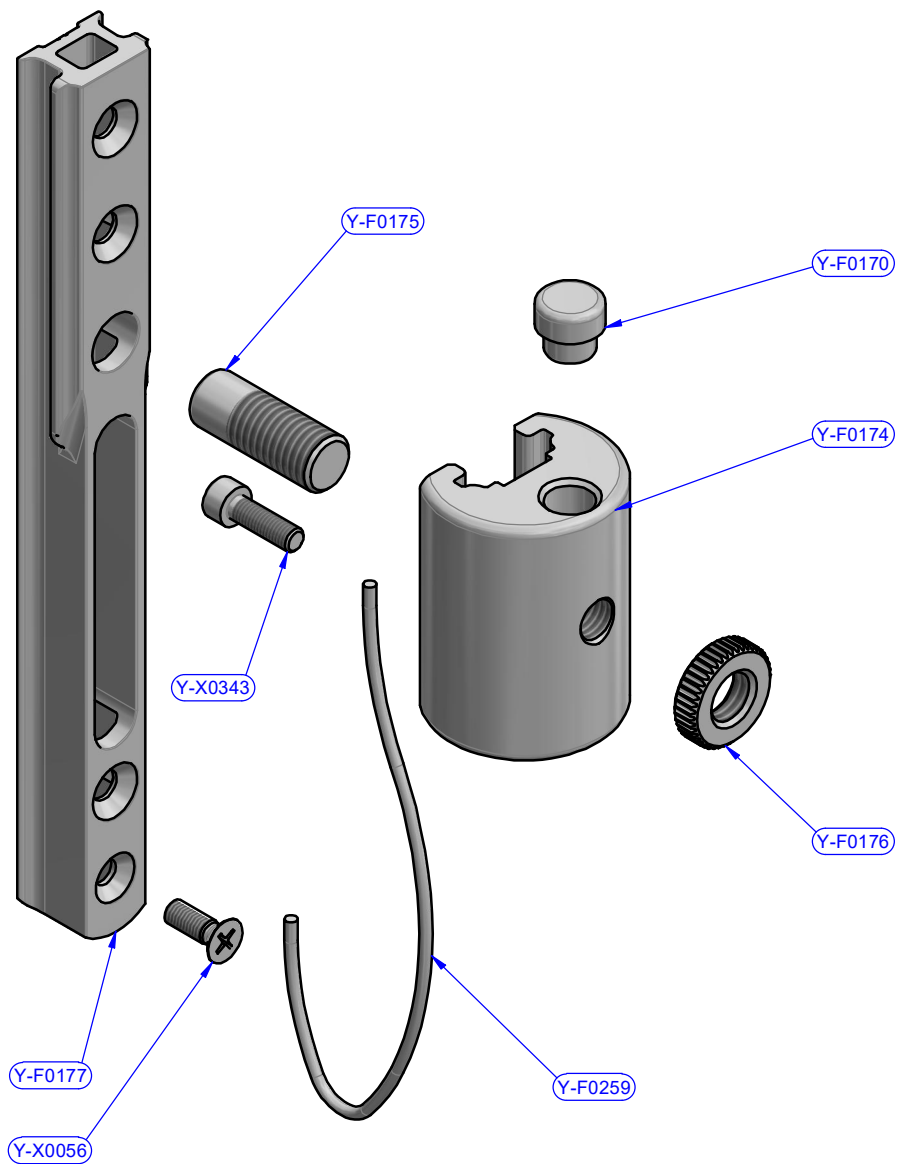


antal

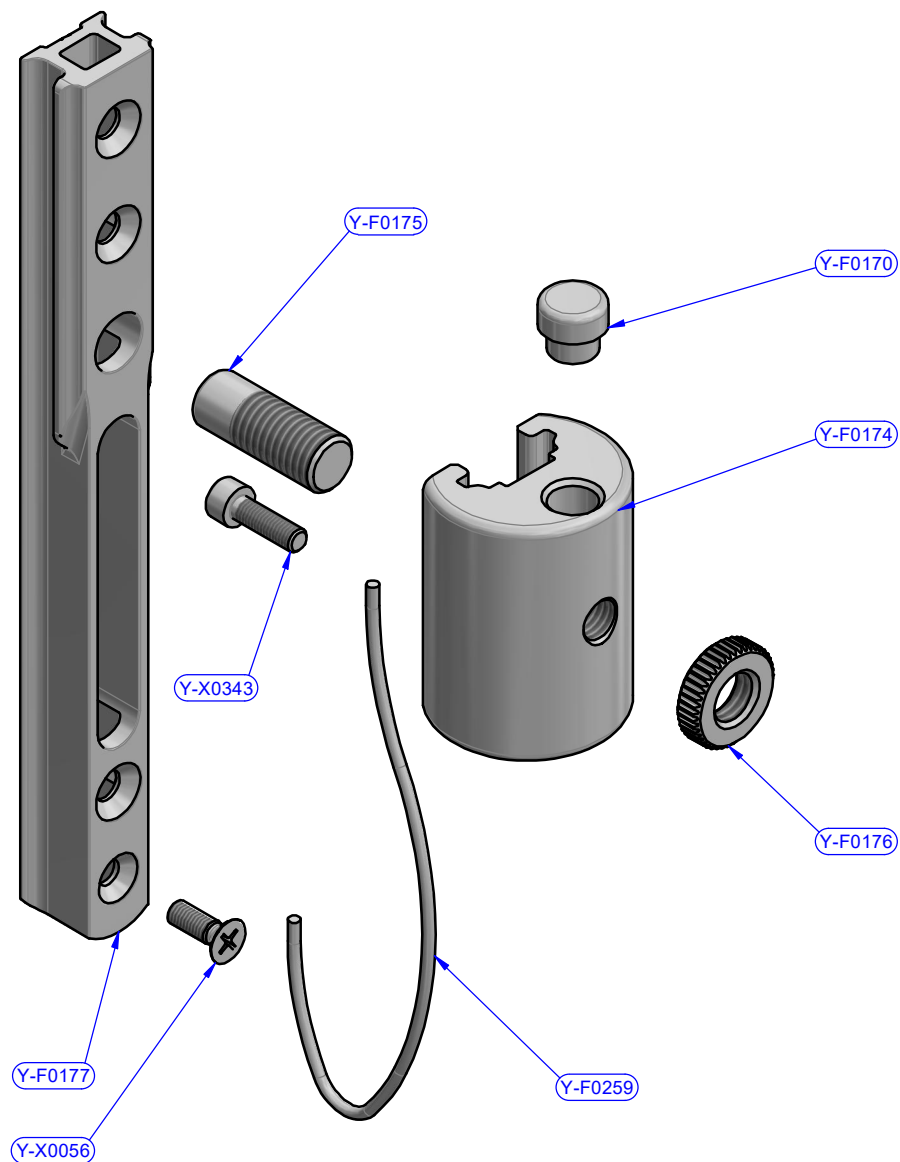
Full Batten systems	HS24 series	HS24.11	SWL	0.19 kg
<small>CATEGORY</small>	<small>FAMILY</small>		<small>WEIGHT</small>	
Loader		<small>MODEL CODE</small>	08/10/2020	1 : 1
<small>ARTICLE</small>		<small>DATE</small>	<small>SCALE</small>	

www.antal.it - antal@antal.it



PART LIST			
CODE	DESCRIPTION	MATERIAL	Q.TY
Y-F0170	Shockproof rubber	Rubber	1
Y-F0174	Slider corps	Mekton	1
Y-F0175	Stop-pin	S.Steel	1
Y-F0176	Stop-pin ring	S.Steel	1
Y-F0177	Track	Aluminium	1
Y-F0259	Drawcord	N.D.	1
Y-X0056	Screw	S.Steel	1
Y-X0343	Screw	S.Steel	1

antal	FAMILY	HS24 series	ARTICLE	Loader	HS24.11	DATE	08/10/2020	REV.	00
	DESCRIPTION	Exploded view		MODEL CODE		DWG N.	17062225	PG.	1 / 1



ELENCO PARTI				
CODICE	DESCRIZIONE	ARTICOLO	MATERIALE	Q.TÀ
Y-F0170	Gomma antiurto	Tonda Ø13,5 x 12	Gomma	1
Y-F0174	Corpo cursore	Ø40 x 54	Mekton	1
Y-F0175	Perno fermo d'arresto	12x32	Inox 316 (A4)	1
Y-F0176	Rotella	21.5x6 - M12	Inox 316 (A4)	1
Y-F0177	Rotaia	Caricatore L200	Alluminio (6005 T6)	1
Y-F0259	Cordino	Ø2.5 x 300 mm	N.D.	1
Y-X0056	Vite TSP TC	DIN 965 M5 x 14	Inox 316 (A4)	1
Y-X0343	Vite TC EI	DIN 912 - M5 x 16	Inox 316 (A4)	1

	Full Batten	HS24	HS24.11		08/10/2020	
	CATEGORIA	FAMIGLIA			DATA	
Caricatore L200 con fermo arresto mobile			CODICE MAGAZZINO	REVISIONE	00	PAG. /